



EQUESTRIAN  
AUSTRALIA

# EA Steward Pathway



**Published by:** Equestrian Australia Limited (EA) ABN 19 077 455 755  
**Acknowledgements:** We would like to acknowledge and appreciate the efforts of the past and present Steward Generals : Katrina Dukats, Jan Golding (Jumping), Christine Wallis (Eventing), Cathie Drury-Klein (Dressage), Jennifer Scott & Sarah Jones (Vaulting) and Irene Malone (Endurance).

***This Pathway guideline is to be used as a reference and starting point on the pre-requisites required to obtain an EA Official accreditation.***

***The Steward workbook will be made available once attendance at a seminar or shadow stewarding has been confirmed, and this shall be used to complete the training and assessment requirements to become an EA Steward, in conjunction with Sport Discipline specific material. Candidates should note that attendance at a course is only part of a Steward qualification.***

**Reproduction in any form is not permitted without contacting:**

Equestrian Australia

*Officials Pathway*

Postal: PO Box 673, Sydney Markets NSW 2129

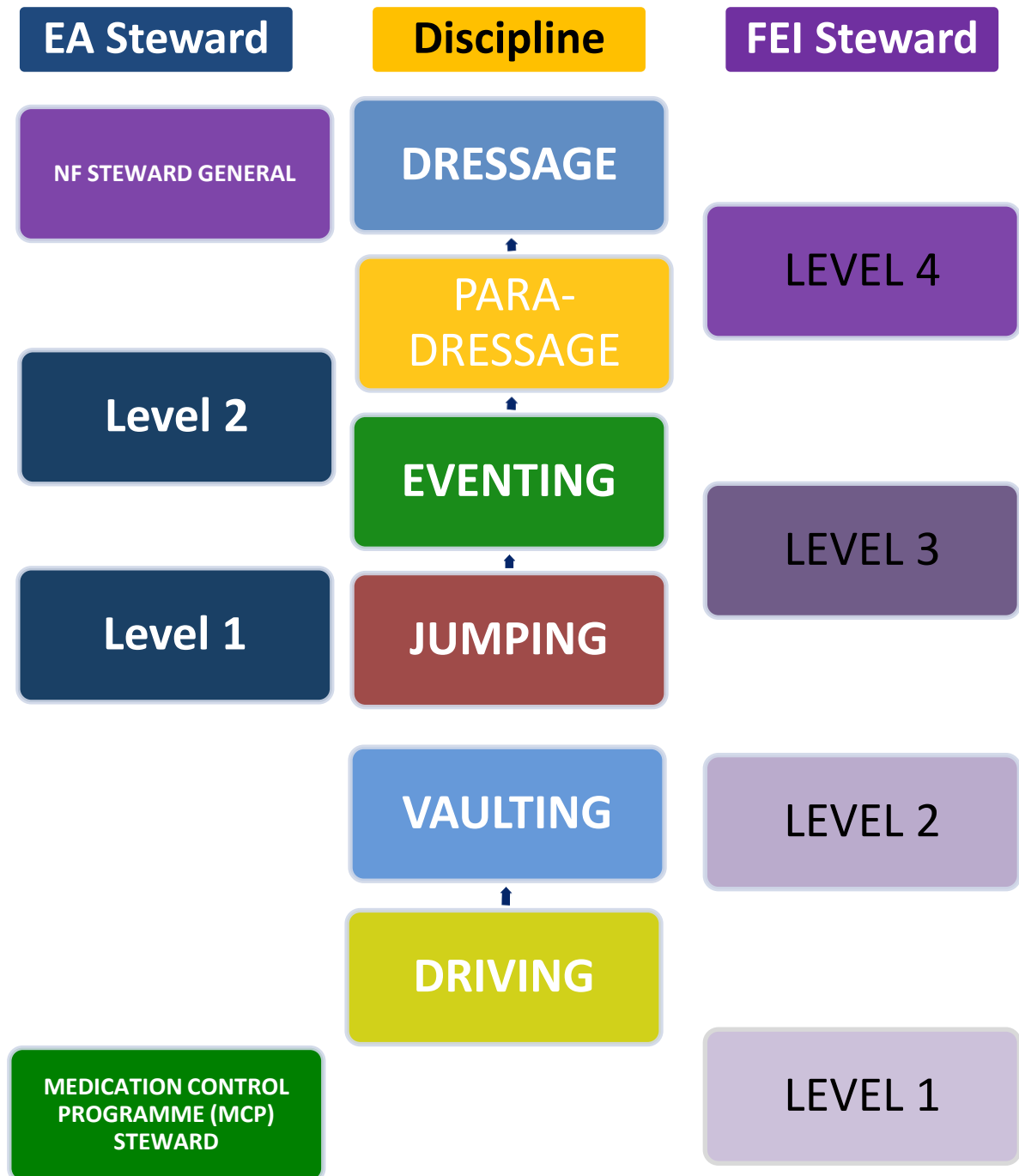
P: 02 8762 7777

Website: [www.equestrian.org.au](http://www.equestrian.org.au)

**Disclaimer:** *Equestrian Australia believes all material produced for this publication is correctly and accurately researched. However, we give no warranty in relation thereto and disclaim liability for all claims against the publication, its employees or any person associated that may arise from any material contained within its pages that may be challenged by any persons.*

# STEWARD PATHWAYS

## (EA and FEI Opportunities)



# Benefits to EA Officials

As an EA Official, you will be able to access benefits on offer from our sponsors and partners. EA have relationships with both Government and Commercial partners and are continually seeking new partnerships to offer incentives that assist our members. For a full list of current partnerships, go to <http://www.equestrian.org.au/Partners>.

*EA appreciate your interest in officiating, and the steps involved in becoming an EA Steward. The following information should assist you with the process, but please don't hesitate to contact the EA office if you have any further questions not answered in this guideline.*

## STEWARDING

Officiating, even in a volunteer capacity, has become much more "professional" in response to the continued expansion and development of our sport. Although many factors contribute to equestrian rider performances, the role of Officials, by way of applying their skills and knowledge, certainly acts as a major influence on the sport's outcomes and reputation.

Due to the tireless effort of Officials, EA has a successful history of promoting *Principles of Fair Play* across Australian equestrian sports under its authority. Furthermore, and in a wider capacity, EA promotes and works in partnership with other equine sports to promote similar ideals for the mutual benefit of all.

To become an EA Official, you need to be physically fit and mentally alert with the ability to concentrate for long periods of time, often with minimal breaks! As an EA Official, you are part of a **team**. You must be approachable and be able to liaise well with the Organising Committee, other Officials and Riders.

EA offers Officials a qualification pathway covering lower level grassroots participation with up and coming rider's through to high level events where top professionals compete.



Stewarding is an integral part of all sports/disciplines. Even though the rules are different for each discipline the underlying principles of stewards remain the same. EA Stewards are experienced equestrian enthusiasts. Regardless of their background, formal training or life experiences, you will be mixing with a group that offer EA a wealth of knowledge, dedication and skills enabling all facets of competition, whether it be high level events where top professionals compete right down to lower

level grass roots club and local events support, and in many cases, first point of contact with EA or FEI officials.

It is important to remember that up and coming athletes often imitate the well-known experienced athletes and proper training methods and behaviour are frequently learnt by example. The Stewards principle aim is to endeavour to ensure that athletes participating in events do so with the utmost respect for their horses, the officials, the public, their fellow athletes and all those involved in the sport.

# HOW DO I BECOME AN EA STEWARD?

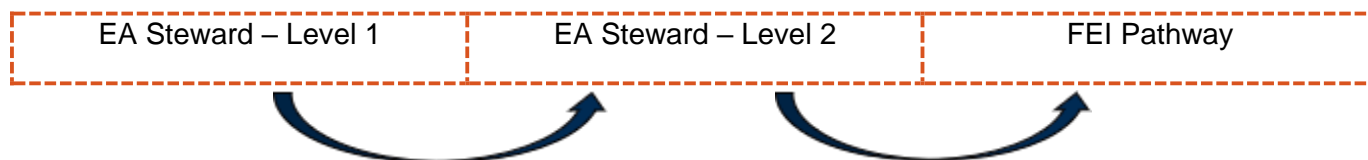
The rules that govern EA National Officials are incorporated into the Equestrian Australia (EA) Policies, Sport Rules, and also reference back to the Federation Equestre Internationale (FEI)

**Note:** EA Rules are updated on 1 January and 1 July of each year. The EA rulebook may be obtained by the following methods:

Electronic (**free of charge**): downloaded from the EA website at [www.equestrian.org.au](http://www.equestrian.org.au)

Printed (**from EA National Office**): call National Office.

The National Pathway has been developed into a two-level system, allowing a process for those who wish to progress to promotion at FEI level.



## Pre-requisites to becoming an EA National Steward:

You must:

### Steward – Level 1:

- Be at least 18 years of age (16 and under 18 year olds can attend a Mentoring programme under the supervision and guidance of an accredited steward – this will count towards the shadowing experiences but accreditation will not be given until the age of 18 is reached)
- Current EA Membership
- Attendance to EA Discipline Specific Level 1 Steward Course
- Completion Risk Management Task
- Generic and Discipline specific ORBT, with a pass mark of 80%
- Personal fitness level that will enable them to physically complete the practical requirements of the course, and the duties required of an EA Steward
- Completion of Sport Australia online Community Officiating General Principles ([www.sportaus.gov.au/coaches\\_and\\_officials/officials](http://www.sportaus.gov.au/coaches_and_officials/officials))
- 2 x Shadow Steward appointments (with FEI Steward preferably with different mentors)

## Steward – Level 2:

- Be a current EA Steward – Level 1
- Attendance to EA Discipline Specific Level 2 Steward Course
- Level 2 Discipline specific ORBT, with a pass mark of 80%
- Personal fitness level that will enable them to physically complete the practical requirements of the course, and the duties required of an EA Steward
- 1 x Shadow Steward appointments (with FEI Steward)

**Note:** The above can be completed in any order depending on local offering. Membership must be purchased before accreditation is obtained. Proof of commencing pathway may be required for some membership types, eg Supporter.

*Seminars are usually arranged by State Branches or Equestrian Australia based on local needs or directive from Steward Generals, and delivered by approved FEI Steward Course Directors. Please get in touch with your State Branch if you are not an EA member, as they will be able to assist here.*

*Once you have completed all of the requirements above, submit your registration and completed assessment forms to National office for approval from the EA Pathway Manager-Officials. Your name and contact details (email/phone) will be placed on the EA Officials list – Stewards under the discipline you have received competency in.*



# STEWARD EXPRESSION OF INTEREST FORM

Name:	Date of Birth:
Address:	
Suburb:	State: Post Code:
Discipline:	Phone/Mobile:
Email:	

Do you have a copy of the current EA Sport rules in the discipline you are interested in?	
YES <input type="checkbox"/> NO <input type="checkbox"/>	
Horse Experience:	Experience as a Rider:  As a Coach:  As a Volunteer, eg Penciller:
Volunteer:	Another Sporting Organisation:  Community Group:  Other:
Any other Relevant Information:	

Candidate Signature: \_\_\_\_\_ Date: \_\_\_\_\_

Send to: EA Pathway– Officials

amy.mcgregor@equestrian.org.au





EQUESTRIAN  
AUSTRALIA

## CONTACT INFORMATION

### Equestrian Australia

P.O Box 673, Sydney Markets NSW, 2140

Tel: 02 8762 7777

State	Contact Details	Discipline	Contact and Email
 EQUESTRIAN QUEENSLAND	<b>Equestrian QLD</b> PO Box 1358 Coorparoo DC QLD 4151 Tel: 07 3891 6611	 DRESSAGE AUSTRALIA	EA Steward General – Dressage : Cathie Drury-Klein <a href="mailto:cathiedk@bigpond.com">cathiedk@bigpond.com</a>
 EQUESTRIAN NEW SOUTH WALES	<b>Equestrian NSW</b> <b>Postal Address:</b> PO Box 7077 Wetherill Park BC NSW 2164 Tel: 02 9620 2660	 PARA-EQUESTRIAN AUSTRALIA	EA Steward General – Dressage : Cathie Drury-Klein <a href="mailto:cathiedk@bigpond.com">cathiedk@bigpond.com</a>
 EQUESTRIAN TASMANIA	<b>Equestrian TAS</b> <b>Postal Address:</b> PO Box 277 Brighton TAS 7030 TEL: 03 6268 5261	 EVENTING AUSTRALIA	EA Steward General – Eventing : Christine Wallis <a href="mailto:gcwallis@activ8.net.au">gcwallis@activ8.net.au</a>
 EQUESTRIAN VICTORIA	<b>Equestrian VIC</b> <b>Postal Address:</b> 400 Epsom Road Flemington VIC 3031 Tel: 03 9013 0707	 JUMPING AUSTRALIA	EA Steward General – Jumping : Jan Golding <a href="mailto:janhowie@bigpond.com">janhowie@bigpond.com</a>
 EQUESTRIAN WESTERN AUSTRALIA	<b>Equestrian WA</b> <b>Postal Address:</b> 303 Cathedral Avenue Brigadoon Western Australia 6069 Tel: 08 9296 1200	 ENDURANCE AUSTRALIA	EA Steward General – Endurance: Robyn Parnell <a href="mailto:nybor63@gmail.com">nybor63@gmail.com</a>
 EQUESTRIAN SOUTH AUSTRALIA	<b>Equestrian SA</b> <b>Postal Address:</b> Unit 10, 2 Cameron Road Mount Barker SA 5251 Tel: (08) 8391 048	 VAULTING AUSTRALIA	EA Steward General – Vaulting : Sarah Jones <a href="mailto:sarahandgreg@bigpond.com">sarahandgreg@bigpond.com</a>
 EQUESTRIAN NORTHERN TERRITORY	<b>Equestrian NT</b> <b>Postal Address:</b> PO Box 1244 Palmerston NT 0831 Tel: 0417 848 545	No EA program currently EOI to EA	  DRIVING AUSTRALIA           SHOW HORSE AUSTRALIA EOI TO <a href="mailto:amy.mcgregor@equestrian.org.au">amy.mcgregor@equestrian.org.au</a>